



Pantawid Pamilyang Pilipino Program

A look at the Pantawid Pamilya's
Monitoring and Evaluation Practice
Through the Years



Outline of Presentation

- I. 4Ps Overview
- II. DSWD Monitoring and Evaluation (M&E)
Policy
- III. 4Ps M&E Implementation
- IV. Future Plans

4Ps Overview

Pantawid Pamilya is a social protection program that aims to build the capacities of poor Filipino families to cross the poverty line thru human capital investment.

As defined in **Republic Act 11310** or 4Ps Act, Pantawid Pamilyang Pilipino Program (4Ps) is the **national poverty reduction strategy** and a **human capital investment program** that provides conditional cash transfer to poor households to improve the **health, nutrition, and education** aspect of their lives.

S. No. 2117
H. No. 7773

Republic of the Philippines
Congress of the Philippines
Metro Manila

Seventeenth Congress

Third Regular Session

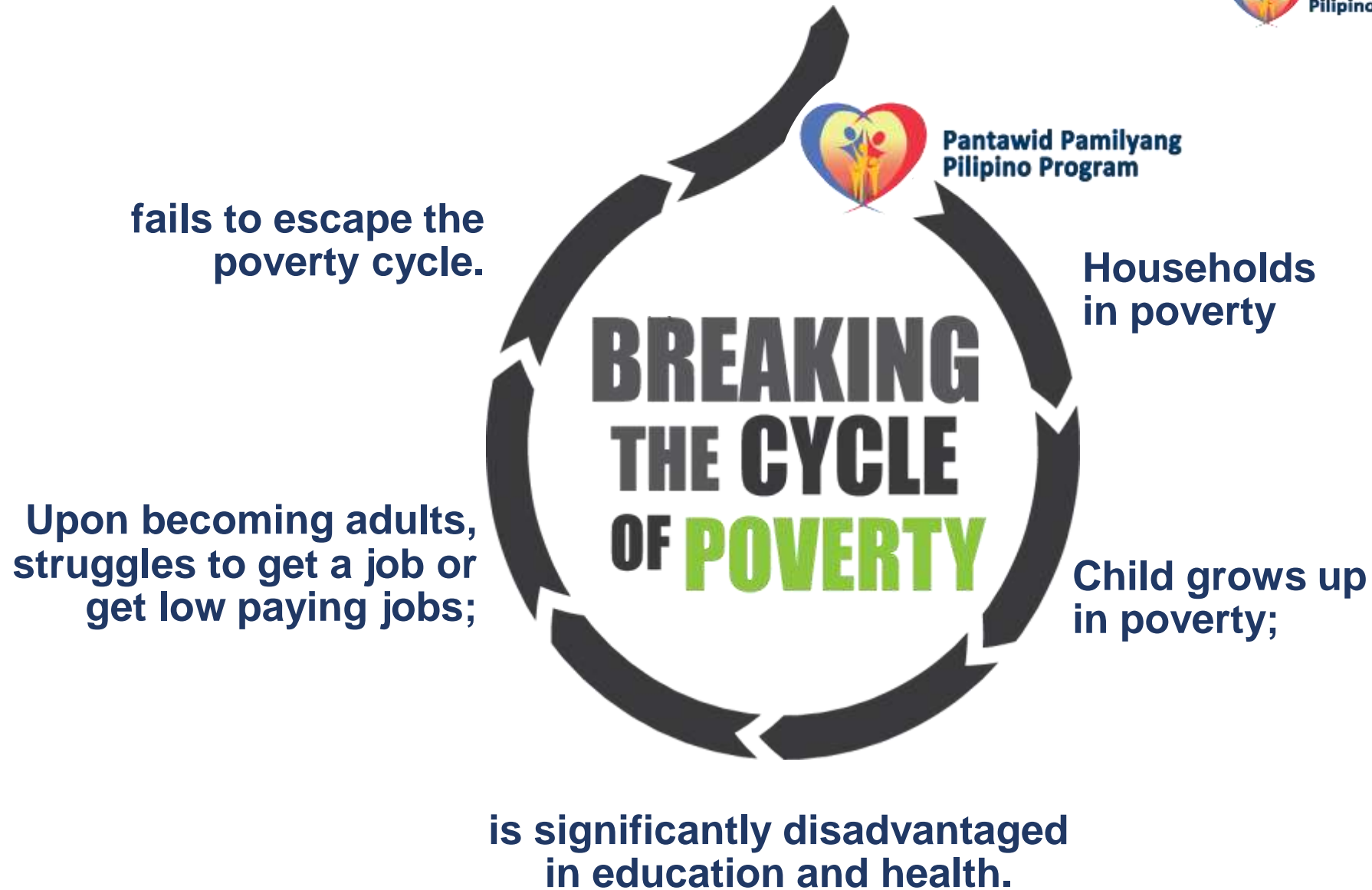
Begun and held in Metro Manila, on Monday, the twenty-third
day of July, two thousand eighteen.

[REPUBLIC ACT NO. **11310**]

AN ACT INSTITUTIONALIZING THE PANTAWID
PAMILYANG PILIPINO PROGRAM (4Ps)

*Be it enacted by the Senate and House of Representatives of the
Philippines in Congress assembled:*

SECTION. 1. *Short Title.* – This Act shall be known as
the “Pantawid Pamilyang Pilipino Program (4Ps) Act”.





ORGANIZATIONAL OUTCOME

Well-being of poor families improved

KEY PROGRAM OUTCOMES

Pantawid Pamilya households regularly availed basic services in education and health services

Increased civic literacy among Pantawid Pamilya households

MAJOR PROGRAM OUTPUTS

Pantawid Pamilya managed effectively

Cash Grants for education and health reached Pantawid Pamilya households on time and in correct amounts

Quality development sessions (i.e. Family/Youth Development Sessions) delivered

Partners engaged to provide complementary services to Pantawid Pamilya households

ACTIVITIES

1. Develop human resources
2. Formulate policies
3. Develop a responsive MIS
4. Conduct impact evaluation and spot checks regularly
5. Adopt a standard targeting system
6. Capacitate national and regional program staff
7. Manage finances
8. Mainstream GAD and IP concerns
9. Implement a social marketing plan
10. Prepare risk management manual
11. Oversee regional PMOs

1. Identify poorest provinces and municipalities;
2. Conduct supply-side assessment;
3. Undertake selection of potential beneficiaries;
4. Carry out validation and registration of potential beneficiaries;
5. Prepare household registry;
6. Initiate release of first cash grant;
7. Verify households' compliance with program conditions;
8. Implement bi-monthly payouts
9. Manage grievances

1. Initiate assessment of needs of Pantawid Pamilya households and their communities;
2. Provide support service interventions to prioritized households;
3. Setup parent groups and community resource persons;
4. Deliver sessions on youth, family, and community development

1. Conduct partnership fora and consultation meetings;
2. Enter into a formal agreement with partners;
3. Implement partnership;
4. Monitor agreements

INPUTS

Budget, Human Resources, Infrastructure

Overall Business Process



Education Grant

300 PHP per child in Elem
500 PHP per child in JHS
700 PHP per child in SHS
per Month
 (Max of 3 children only per HH)

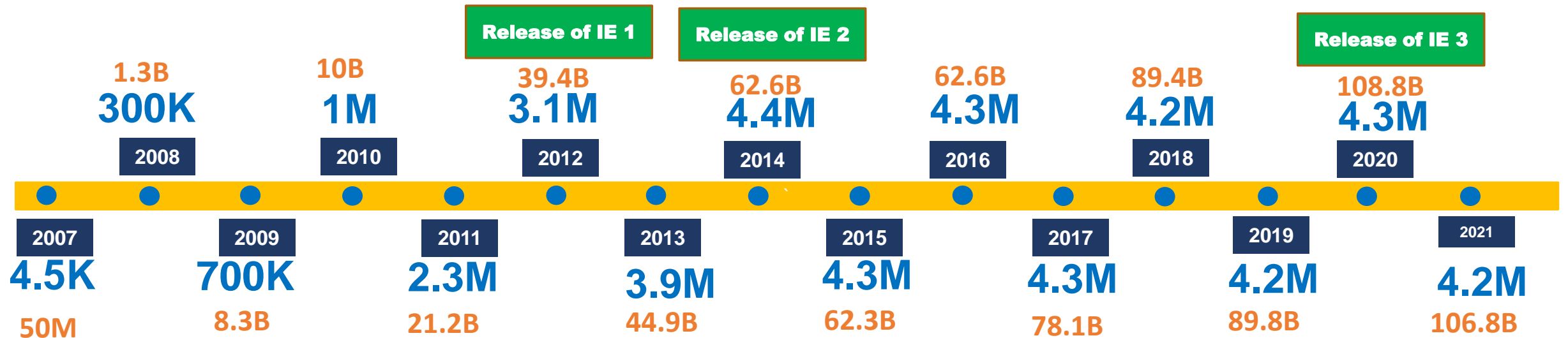
Health Grant

750 PHP per HH
per Month
 (HH should be compliant to the conditions on health and parenting to receive this)

Rice Subsidy

600 PHP per HH
per Month
 (HH should be compliant to at least one condition to receive this)

Program Timeline (2007-2021)



Legend: ■ No of beneficiaries ■ Budget Allocation

DSWD M&E Policy

DSWE M&E Policy

Issuance	Subject	Date
AO 010, s.2006	<u>Policy Guidelines for Conduct of Studies/ Research in DSWD offices, Centers and Institutions</u>	17 Nov 2006
AO 004, s.2007	<u>Amendment to Administrative Order No. 10, s.2006, Re: Policy Guidelines for the Conduct of Studies/Researches in DSWD Offices, Centers and Institutions</u>	27 Feb 2007
MC 011, s.2009	<u>Guidelines for the Formulation of DSWD's 5-Year Research Agenda</u>	08 Jun 2009
MC 014, s.2009	<u>Revised Terms of Reference (TOR) for the Research and Development Technical Working Group (RD-TWG)</u>	17 Jun 2009
MC 001, s.2010	<u>DSWD Research Agenda CY 2010-2014</u>	04 Jan 2010
AO 009, s.2011	<u>Guidelines in the Provision of Research Grant for the Implementation of the DSWD Five (5)-Year (2010-2014) Research Agenda</u>	14 Jun 2011

DSWE M&E Policy

Issuance	Subject	Date
AO 019, s.2011	<u>Policy Guidelines on the Conduct of Research Studies in DSWD Offices, Centers and Institutions Amending, Administrative Order No. 10, Series of 2006 and Administrative Order No. 4, Series of 2007</u>	14 Sep 2011
AO 011, s.2014	<u>Establishment of the Research, Monitoring and Evaluation Office (RMEO)</u>	03 Nov 2014
AO 022, s.2019	<u>The DSWD Research and Evaluation Agenda 2019-2020.</u>	27 Dec 2019
MC 009, s.2019	<u>Guidelines for the Conduct of Research and Evaluation in the DSWD or "THE DSWD RESEARCH AND EVALUATION POLICY"</u>	15 May 2019
MC 010, s.2019	<u>Protocol for the Conduct of Research Studies in DSWD Offices, Centers and Institution, Amending Administration Order N. 19, s. 2011 including Request of SWD Data/Information.</u>	15 May 2019

4Ps M&E

Implementation Impact Evaluation

ADB and WB Loan Covenants on the conduct of Impact Evaluation

Loan	Year
Social Welfare Development and Reform Project (SWDRP)	2010
Social Protection Support Project (SPSP) Loan Agreement	2011
SPSP – Additional Financing (SPSP-AF) Loan Agreement	2016
SWDRP II-AF Project Appraisal Document	2019
Expanded Social Assistance Project (ESAP)	2020

CONDUCT of IMPACT EVALUATION

- Loan agreement with WB
-

Project Description

The objective of the Project is to support the National Program Support for Social Protection of DSWD to improve the use of health and education services of poor children.

The Project consists of the following parts:

Part 1: Support to the Pantawid Pamilya

Provision by the Borrower of Conditional Cash Transfer Grants (“CCT Grants”) under the Pantawid Pamilya to CCT Beneficiaries in order to enable them to access health and/or education services under the terms and conditions set out in the Pantawid Pamilya Operations Manual.

Part 2: Strengthening of CCT Implementation and Monitoring and Evaluation

Enhancing the capacity of the DSWD’s Pantawid Pamilya National Project Management Office (“NPMO”) to deliver the Pantawid Pamilya, including through: (a) strengthening policy analysis and monitoring and evaluation capacity, including conducting a Pantawid Pamilya impact evaluation and annual Pantawid Pamilya implementation spot checks; (b) training of central, regional and municipal staff to deliver the Pantawid Pamilya ; (c) developing content for, and strengthening capacity to deliver, strategic communications, including strengthening the beneficiary feedback mechanism; and (d) training for the development and delivery of family and youth development sessions.

CONDUCT of IMPACT EVALUATION

- Loan agreement with ADB
-

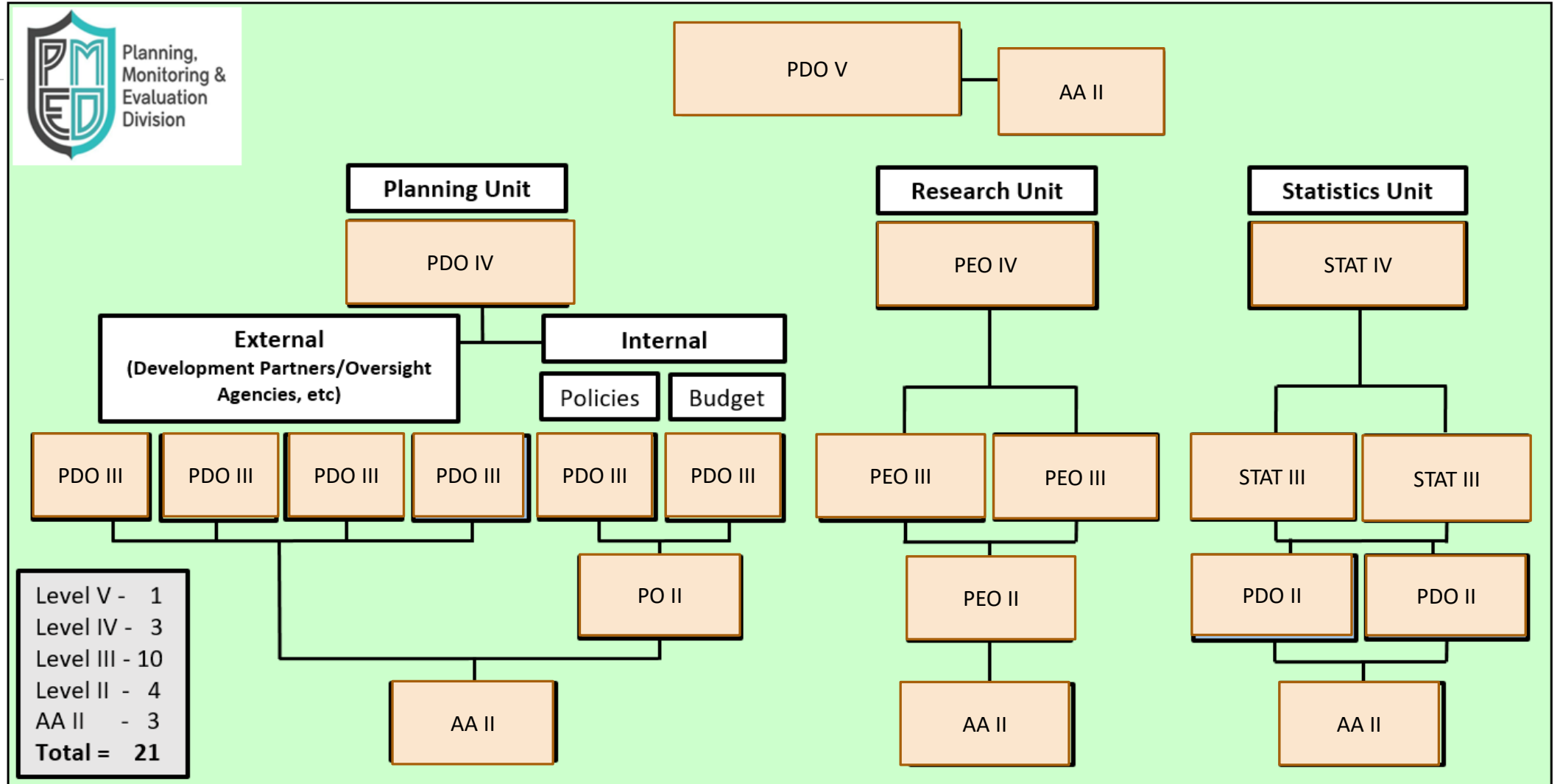
“11. The Borrower shall cause DSWD to:

(a) conduct a midterm review of the Pantawid, in conjunction with ADB, within 24 months of the Effective Date;

(b) (i) commencing on January 1, 2016 and each year thereafter, conduct annual external independent spot checks, of the Pantawid implementation, procedures, and systems; (ii) report to the DSWD Executive Committee and ADB on the outcomes of the annual external spot checks in a timely manner; and (iii) deliver to ADB the report prepared following the completion of such annual external spot check within 30 days of DSWD’s receipt of such report; and

(c) conduct an impact evaluation of the Pantawid and deliver to ADB the impact evaluation report by the Project completion.”

Creation of M&E Team (2010)



Impact Evaluation Plan



	IE 1	IE 2	IE 3
I. Design and Sampling			
Design	Randomized Control Trials (RCT)	Regression Discontinuity Design (RDD)	Regression Discontinuity Design (RDD)
No. of Respondents	3,742 (HH)	5,041 (HH)	6,775 (HH)
II. Data Collection and Analysis			
Data Collection (Service Provider, Tool development, Fund source and cost, Year conducted)	Social Weather Stations Joint crafting (WB - Php 28,625,736.00) 2011	Social Weather Stations Joint crafting (WB - Php 38,565,210.00) 2013	Social Weather Stations Joint crafting (ADB - Php 44,000,000.00) 2017 – 2018
Data Analysis (Fund source and cost)	World Bank (WB) and DSWD counterparts	Aniceto Orbeta, Jr. (lead) Arnelyn Abdon, Michael del Mundo, Melba Tutor, Marian Theresia Valera, and Damaris Yarcia.	Philippine Institute for Development Studies (PIDS) GOP - Php 7,399,645.00)
III. Advocacy	AIM, 2012	2014	PIDS webinar, 2020
IV. Institutional Arrangement	TWG – DSWD, WB, ADB	TWG – DSWD, WB, ADB, Lead Researcher	TWG – DSWD, PIDS, WB, ADB

IE Implementation Lessons and Challenges

Activities	IE 1	IE 2	IE 3	Government Action
Preparatory Activities	<ul style="list-style-type: none"> - Procurement of Data Collection Service Provider 	<ul style="list-style-type: none"> - Procurement of Data Collection Service Provider 	<ul style="list-style-type: none"> - Procurement of Data Collection Service Provider - Change in management/buy in of new officials 	<ul style="list-style-type: none"> - Close monitoring of procurement process - Reiteration of loan agreements to management
Design and Sampling	<ul style="list-style-type: none"> - RCT Design-Engagement of stakeholders - Grants on hold for control group; 	<ul style="list-style-type: none"> - Change in design (from RCT to RDD) 	<ul style="list-style-type: none"> - RDD - Management perspective on the design of the study 	<ul style="list-style-type: none"> - Strengthening of internal competency - Securing management support
Questionnaire Development	<ul style="list-style-type: none"> - Pilot testing - Finalization 	<ul style="list-style-type: none"> - Pilot testing - Finalization 	<ul style="list-style-type: none"> - Pilot testing - Finalization 	Collaborative effort

Implementation of IE and Challenges

Activities	IE 1	IE 2	IE 3	Government Action
Data Collection	- Peace and order in some research sites	- Peace and order in some research sites	- Peace and order in some research sites	- Close coordination with FO
Analysis	---	- Procurement of Local Consultants - Budgeting	- Partnership with PIDS - Budgeting - Pre-mature release of data sets	Perspective – Local vs Foreign
Report Dissemination	---	---	Delayed dissemination of findings (pre-pandemic data)	Sharing of report and data sets to public Policy formulation Program modification

Future Plans

7-Year Impact Evaluation Plan

Activities	IE 4	IE 5	IE 6
Implementation	2022	2025	2028
Overall Implementer	PIDS	PIDS	PIDS
Fund source	GOP	GOP	GOP
Design	RDD and/or RCT	RDD	RDD
Indicators for consideration	<ul style="list-style-type: none"> - Education - Health - Impact of Covid-19 - Program impact on Poverty incidence 	<ul style="list-style-type: none"> - Income sustainability - Impact to transient and chronic poverty 	Adult beneficiaries in the Post IE <ul style="list-style-type: none"> - Education - Nutrition - Escape from poverty cycle
Institutional Arrangement	TWG – DSWD, PIDS, NEDA	TWG – DSWD, PIDS, NEDA	TWG – DSWD, PIDS, NEDA

Thank You!
